

**7<sup>th</sup> SUNDAY OF EASTER  
MAY 31-JUNE 1, 2025**

**ORDERS OF WORSHIP**

**Saturday Worship - 5pm**

Welcome & Announcements

Invocation

Call to Worship

Confession & Forgiveness

Litany of Praise

Prayer of the Day

Bible Readings

Message

Hymn of the Day

ELW 715

Creed, Prayers and Peace

The Words of Communion

Communion

The Lord's Prayer

Blessing & Sending

**Sunday Liturgical - 10am**

Prelude

Invocation

Call to Worship

Confession & Forgiveness

Opening Hymn

ELW 502

Greeting

p. 147

Kyrie

p. 147

Prayer of the Day

First Bible Reading

Psalms of the Day

Psalms 97

Second Bible Reading

Gospel Acclamation

Today's Message

Hymn of the Day

ELW 715

Creed, Prayers & Peace

Offertory

Offering

Eucharistic Liturgy & Lord's Prayer

p. 154

Lamb of God & Distribution

p. 154

Blessing & Prayer

p. 155

Benediction & Sending Hymn

ELW 537

Dismissal



**WEEKLY WORSHIP  
BULLETIN FOR  
ST. JOHN'S  
LUTHERAN CHURCH  
OF THE ERIE LUTHERAN PARISH**

2216 PEACH STREET, ERIE PA 16502  
814.456.7596 WWW.STJOHNSERIE.ORG

**YOU BELONG HERE**

We welcome you to our congregation this weekend! We are glad to have you with us. We celebrate Holy Communion at every service. We believe that Christ is present in this meal of forgiveness and unconditional love. We welcome all to join us at the Lord's Table. If you choose not to commune, we welcome you to come forward for a blessing.

If you are new to us, everything you need for worship is projected on the screen and in this bulletin. Please feel free to use the red hymnal found in your pew, if you are more comfortable. The pages and hymn numbers are to the left of this bulletin.

Please join us for coffee after worship in the lobby.

Should you need a restroom, they are through the glass doors in the back of the nave (sanctuary) and down the hallway on your left. A family/handicap accessible restroom with baby changing station is available in the front lobby (Peach Street entrance).

**TODAY'S THEME**

It is possible to hear in Jesus' high priestly prayer, a prayer he offered shortly before his death, the petitions of the ascended Christ for his own throughout history—to our day—and beyond. Jesus prays for us. In holy baptism we become believers in God, have our robes washed in the flood of Christ's forgiveness, and receive the gift of life forever with all the saints.

**Today's Bible Readings**

Acts 16:16-34

Pew Bible p. 900

Psalms 97

Pew Bible p. 480

Revelation 22:12-14, 16-17, 20-21

Pew Bible p. 1009

John 17:20-26

Pew Bible p. 880

**Today's Message**

*"God Always Comes Down"*

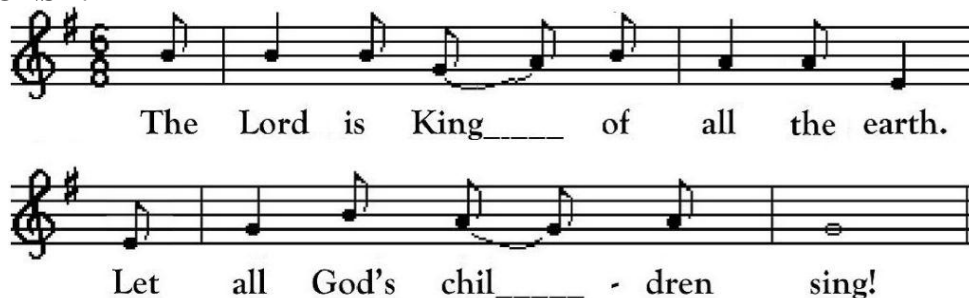
*by Rev. Ralph Mineo*

### PRAYER OF THE DAY:

O God, form the minds of your faithful people into your one will. Make us love what you command and desire what you promise, that, amid all the changes of this world, our hearts may be fixed where true joy is found, your Son, Jesus Christ our Lord, who lives and reigns with you and the Holy Spirit, one God, now and forever.

**Amen.**

### PSALM RESPONSE:



*Psalm 97 paraphrase © 1994 by Pastor Ralph Mineo. All rights reserved.*

### OUR PRAYER LISTS:

**Members:** Barb Huff, Tom Tell, Nancy Varner, Janel Anderson, Carol Snippert, Carolyn Sturtevant, Barb Kulisek, Phil Nagy

#### Cancer treatments:

**Friends of the congregation:** Michelle, Baby Easton, Matt, Mary Bemis, Derf Hopsecger, Jonathan B., Joe Mineo, Heidi Sturtevant, Jill Eichner, Walter Ang, Charles Schlaufman, Rev. Bill Cox, Frank Mineo, Marge Fries

**Cancer Friends:** Chris, Denny Hetrick, John Wurst

#### Pray for those who grieve:

***Prayer Requests/Names will be removed on the 1st of each month unless otherwise requested. If you would like a name on the prayer list, please use the "Prayer Request" link on our church website, email or phone the church office.***

**HYMN REQUESTS:** If anyone would like to request a favorite hymn for the 10:00 AM Service, please contact Kathy Swanson (swanson1910@gmail.com) or contact Rachel in the church office (office@stjohnserie.org) with the particular hymn. We ask that the hymn be in the red ELW hymnal.

**Special Music** - We are always looking for Special Music in the summer (or anytime really). If any individual or group would like to share their musical talents during the Sunday, 10:00 AM service, please contact Kathy Swanson or let the Church Office know. We look forward to hearing from our talented parishioners.

**Erie Lutheran Conference Survey:** The purpose of the survey is to get a better sense of our collective hopes for the future and our openness to collaborative ministry. Please take a few minutes to complete our mission profile survey by:

- (1) Scanning the barcode to the right, OR
- (2) Picking up a paper copy located near the entrances to the sanctuary. Completed surveys can be returned to the church office.

Contact Tim Durst or Carolyn Sturtevant with any questions.

