

**7th Sunday After Pentecost
JULY 6-7, 2024**

ORDERS OF WORSHIP

Saturday Worship - 5pm

Welcome & Announcements

Invocation

Call to Worship

Confession & Forgiveness

Litany of Praise

Prayer of the Day

Bible Readings

Message

Hymn of the Day

ELW 779

Creed, Prayers and Peace

The Words of Communion

Communion

The Lord's Prayer

Blessing & Sending

Sunday Worship - 10am

Prelude

Welcome

Confession & Forgiveness

Opening Hymn

ELW 796

Greeting

p. 203

Kyrie

p. 203

Hymn of Praise

p. 204

Prayer of the Day

First Bible Reading

Psalm of the Day

Psalm 123

Second Bible Reading

Gospel Acclamation

ELW 205

Today's Message

Hymn of the Day

ELW 574

Creed, Prayers & Peace

Offertory

Offering

Eucharistic Liturgy & Lord's Prayer

p. 208

Lamb of God & Distribution

p. 208

Blessing & Prayer

p. 209

Benediction & Sending Hymn

ELW 576

Dismissal



**WEEKLY WORSHIP
BULLETIN FOR
ST. JOHN'S
LUTHERAN CHURCH
OF THE ERIE LUTHERAN PARISH**

2216 PEACH STREET, ERIE PA 16502
814.456.7596 WWW.STJOHNSERIE.ORG

YOU BELONG HERE

We welcome you to our congregation this weekend! We are glad to have you with us. We celebrate Holy Communion at every service. We believe that Christ is present in this meal of forgiveness and unconditional love. We welcome all to join us at the Lord's Table. If you choose not to commune, we welcome you to come forward for a blessing.

If you are new to us, everything you need for worship is projected on the screen and in this bulletin. Please feel free to use the red hymnal found in your pew, if you are more comfortable. The pages and hymn numbers are to the left of this bulletin.

Please join us for coffee after worship in the lobby.

Should you need a restroom, they are through the glass doors in the back of the nave (sanctuary) and down the hallway on your left. A family/handicap accessible restroom with baby changing station is available in the front lobby (Peach Street entrance).

TODAY'S THEME

Jesus does great deeds of power and gives his disciples authority over demons. Yet none of this power is unilateral; it all must be received by faith. Jesus asks his disciples to go out without money or supplies, so that they will be dependent on how others receive them. When we are sent from the assembly to witness and to heal, we are asked to be vulnerable, to be dependent on the reception of others. The Spirit always operates in the "between": between Jesus and his Abba, between Jesus and us, between you and me, between us and those to whom we are sent.

Today's Bible Readings

Ezekiel 2:1-5

Pew Bible p. 673

2 Corinthians 12:2-10

Pew Bible p. 943

Psalm 123

Pew Bible p. 498

Mark 6:1-13

Pew Bible p. 817

Today's Message

"Keep On Keeping On"

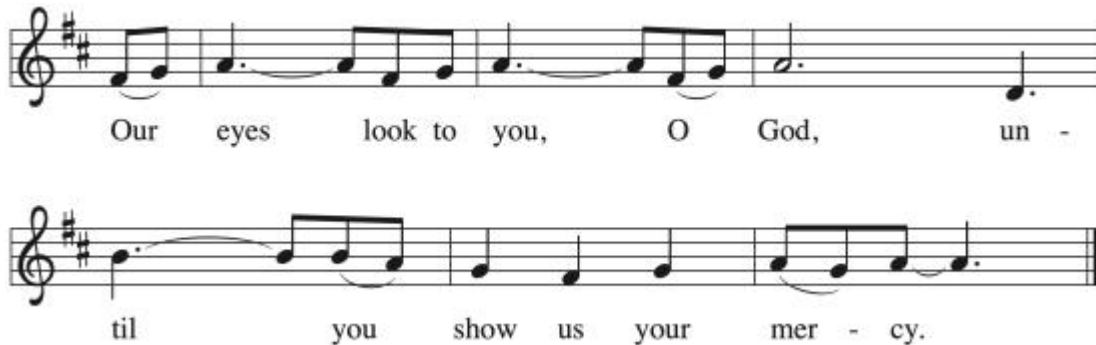
by Rev. Ralph Mineo

PRAYER OF THE DAY:

God of the covenant, in our baptism you call us to proclaim the coming of your kingdom. Give us the courage you gave the apostles, that we may faithfully witness to your love and peace in every circumstance of life, in the name of Jesus Christ, our Savior and Lord.

Amen.

PSALM RESPONSE:



OUR PRAYER LISTS:

Members: Barb Huff

Cancer treatments:

Friends of the congregation: Ian Minner, Rev. Jerry Gray, Michelle, Baby Easton

Cancer Friends: Canda, Chris

Other prayer requests:

Prayer Requests/Names will be removed on the 1st of each month unless otherwise requested. If you would like a name on the prayer list, please use the "Prayer Request" link on our church website, email or phone the church office.

"What It Means To Be A Lutheran"

Pastor Ralph is leading this session for anyone interested in becoming a member of St. John's and for anyone interested in a refresher: Sunday, September 15 from 2:00 p.m. to 7:00 p.m. For those interested in attending, there's a sign-up sheet on the church office window. Please sign up, since Pastor Ralph is preparing a booklet for each participant. To provide a meal for those attending the session, we will have a congregational potluck at 5:00 p.m. on September 15.

Favorite Hymns - If anyone would like to request a favorite hymn for the 10:00 AM service please contact Kathy Swanson (kathy@stjohnserie.org) or call/email the church office (office@stjohnserie.org) with the particular hymn. We ask that the hymn be in the red ELW hymnal. You can, also, drop the name and number of the hymn in the Offering plate.

Special Music - We are always looking for Special Music in the summer (or anytime really). If any individual or group would like to share their musical talents during the Sunday, 10:00 AM service, please contact Kathy Swanson or let the Church Office know. We look forward to hearing from our talented parishioners.