

**6<sup>th</sup> Sunday After Pentecost  
JUNE 29-30, 2024**

**ORDERS OF WORSHIP**

**Saturday Worship - 5pm**

Welcome & Announcements  
Invocation  
Call to Worship  
Confession & Forgiveness  
Litany of Praise  
Prayer of the Day  
Bible Readings  
Message

Hymn of the Day ELW 612

Creed, Prayers and Peace  
The Words of Communion  
Communion  
The Lord's Prayer  
Blessing & Sending

**Sunday Worship - 10am**

Prelude  
Welcome  
Confession & Forgiveness  
Opening Hymn ELW 712  
Greeting p. 203  
Kyrie p. 203  
Hymn of Praise p. 204  
Prayer of the Day  
First Bible Reading  
Psalm of the Day Psalm 30  
Second Bible Reading  
Gospel Acclamation ELW 205  
Today's Message  
Hymn of the Day ELW 612  
Creed, Prayers & Peace  
Offertory  
Offering  
Eucharistic Liturgy & Lord's Prayer p. 208  
Lamb of God & Distribution p. 208  
Blessing & Prayer p. 209  
Benediction & Sending Hymn ELW 733  
Dismissal



**WEEKLY WORSHIP  
BULLETIN FOR  
ST. JOHN'S  
LUTHERAN CHURCH  
OF THE ERIE LUTHERAN PARISH**

2216 PEACH STREET, ERIE PA 16502  
814.456.7596 WWW.STJOHNSERIE.ORG

**YOU BELONG HERE**

We welcome you to our congregation this weekend! We are glad to have you with us. We celebrate Holy Communion at every service. We believe that Christ is present in this meal of forgiveness and unconditional love. We welcome all to join us at the Lord's Table. If you choose not to commune, we welcome you to come forward for a blessing.

If you are new to us, everything you need for worship is projected on the screen and in this bulletin. Please feel free to use the red hymnal found in your pew, if you are more comfortable. The pages and hymn numbers are to the left of this bulletin.

Please join us for coffee after worship in the lobby.

Should you need a restroom, they are through the glass doors in the back of the nave (sanctuary) and down the hallway on your left. A family/handicap accessible restroom with baby changing station is available in the front lobby (Peach Street entrance).

**TODAY'S THEME**

A woman finds healing by touching Jesus' cloak, and a girl is restored to life when he takes her by the hand. In both cases a boundary is crossed: in Jesus' time the hemorrhaging woman was considered ritually unclean, polluting others by her touch, and anyone who touched a corpse also became unclean. In Mark's gospel Jesus breaks down barriers, from his first meal at a tax collector's house to his last breath on the cross as the temple curtain is torn in two. We dare to touch Jesus in our "uncleanness" and to live as a community that defines no one as an outsider.

**Today's Bible Readings**

Lamentations 3:22-33	Pew Bible p. 669
2 Corinthians 8:7-15	Pew Bible p. 941
Psalm 30	Pew Bible p. 439
Mark 5:21-43	Pew Bible p. 816

**Today's Message**

*"Healer of Our Every Ill"*

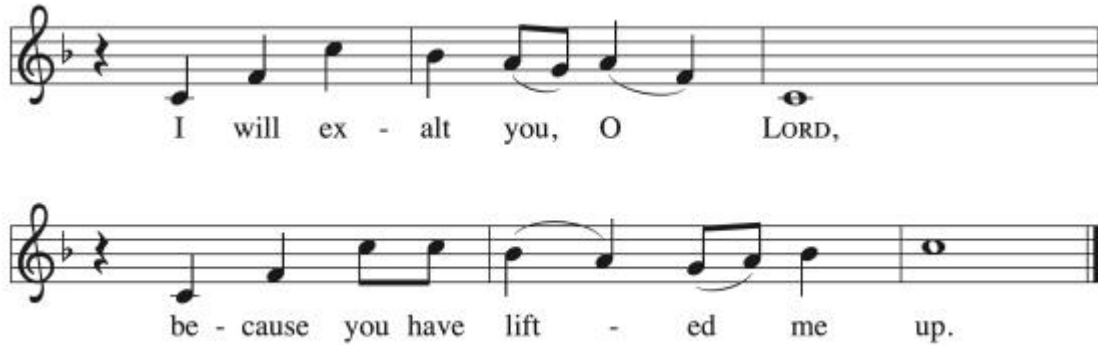
*by Rev. Ralph Mineo*

**PRAYER OF THE DAY:**

Almighty and merciful God, we implore you to hear the prayers of your people. Be our strong defense against all harm and danger, that we may live and grow in faith and hope, through Jesus Christ, our Savior and Lord.

**Amen.**

**PSALM RESPONSE:**



**OUR PRAYER LISTS:**

**Members:** Barb Huff

**Cancer treatments:**

**Friends of the congregation:** Ian Minner, Rev. Jerry Gray, Michelle, Baby Easton

**Cancer Friends:** Canda, Chris

**Other prayer requests:**

*Prayer Requests/Names will be removed on the 1st of each month unless otherwise requested. If you would like a name on the prayer list, please use the "Prayer Request" link on our church website, email or phone the church office.*

**"What It Means To Be A Lutheran"**

Pastor Ralph is leading this session for anyone interested in becoming a member of St. John's and for anyone interested in a refresher: Sunday, September 15 from 2:00 p.m. to 7:00 p.m. For those interested in attending, there's a sign-up sheet on the church office window. Please sign up, since Pastor Ralph is preparing a booklet for each participant. To provide a meal for those attending the session, we will have a congregational potluck at 5:00 p.m. on September 15.

**Favorite Hymns** - If anyone would like to request a favorite hymn for the 10:00 AM service please contact Kathy Swanson ([kathy@stjohnserie.org](mailto:kathy@stjohnserie.org)) or call/email the church office ([office@stjohnserie.org](mailto:office@stjohnserie.org)) with the particular hymn. We ask that the hymn be in the red ELW hymnal. You can, also, drop the name and number of the hymn in the Offering plate.

**Special Music** - We are always looking for Special Music in the summer (or anytime really). If any individual or group would like to share their musical talents during the Sunday, 10:00 AM service, please contact Kathy Swanson or let the Church Office know. We look forward to hearing from our talented parishioners.