

**4<sup>th</sup> Sunday of Easter**  
**APRIL 20-21, 2024**

**ORDERS OF WORSHIP**

**Saturday Worship - 5pm**

Welcome & Announcements

Invocation

Call to Worship

Confession & Forgiveness

Litany of Praise

Prayer of the Day

Bible Readings

Message

Hymn of the Day

*"The Lord Is My Shepherd" (see screen)*

Creed, Prayers and Peace

The Words of Communion

Communion

The Lord's Prayer

Blessing & Sending

**Sunday Worship - 10am**

Prelude

Welcome

Confession & Forgiveness

Opening Hymn

ELW 392

Greeting

p. 147

Kyrie

p. 147

Hymn of Praise

p. 149

Prayer of the Day

First Bible Reading

Psalm of the Day

Psalm 23

Second Bible Reading

Gospel Acclamation

ELW 172

Today's Message

Hymn of the Day

ELW 778

Creed, Prayers & Peace

Offertory

Offering

Eucharistic Liturgy & Lord's Prayer p. 154

Lamb of God & Distribution p. 154

Blessing & Prayer p. 155

Benediction & Sending Hymn ELW 789

Dismissal



**WEEKLY WORSHIP**  
**BULLETIN FOR**  
**ST. JOHN'S**  
**LUTHERAN CHURCH**  
**OF THE ERIE LUTHERAN PARISH**

2216 PEACH STREET, ERIE PA 16502  
814.456.7596 WWW.STJOHNSERIE.ORG

**YOU BELONG HERE**

We welcome you to our congregation this weekend! We are glad to have you with us. We celebrate Holy Communion at every service. If you are a baptized Christian, please join us at the Lord's Supper. We ask that you come down the center aisle as directed and receive your wafer and wine as you walk back to your seat.

If you are new to us, everything you need for worship is projected on the screen and in this bulletin. Please feel free to use the red hymnal found in your pew, if you are more comfortable. The pages and hymn numbers are to the left of this bulletin.

Please join us for coffee after worship in the lobby.

Should you need a bathroom, they are through the glass doors in the back of the nave (sanctuary) and down the hallway on your left. A family/handicap accessible restroom with baby changing station is available in the front lobby (Peach Street entrance).

-----  
**TODAY'S THEME**

The image of the good shepherd shows us how the risen Christ brings us to life. It is the relationship between the shepherd and the sheep, one of mutual knowledge and love, that gives the shepherd authority. The shepherd's willingness to lay down his life for the sheep shows his love. First John illustrates what it means to lay down our lives for one another by the example of sharing our wealth with any sibling in need.

**Today's Bible Readings**

Acts 4:5-12 Pew Bible p. 887

1 John 3:16-24 Pew Bible p. 990

Psalm 23 Pew Bible p. 435

John 10:11-18 Pew Bible p. 872

**Today's Message**

*"Jesus the Good Shepherd"*

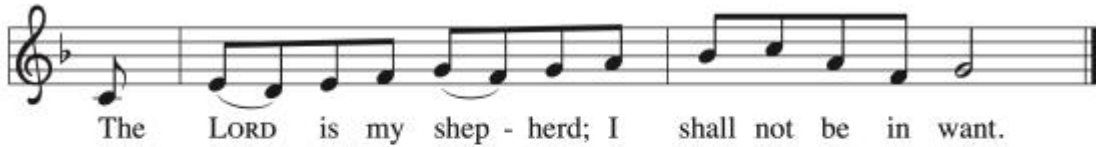
*by Rev. Ralph Mineo*

**PRAYER OF THE DAY:**

O Lord Christ, good shepherd of the sheep, you seek the lost and guide us into your fold. Feed us, and we shall be satisfied; heal us, and we shall be whole. Make us one with you, for you live and reign with the Father and the Holy Spirit, one God, now and forever.

**Amen.**

**PSALM RESPONSE:**



Psalm 23:1

Psalm refrain reproduced from *Psalter for Worship Year B* © 2008 Augsburg Fortress.  
May be reproduced by permission for local use only.

**OUR PRAYER LISTS:**

**Members:** Barb Huff, Bill, the family of Sylvia Rekitt, the family of Marilyn Sommers, & the family of Carol Schroeck.

**Cancer treatments:**

**Friends of the congregation:** Ian Minner, Jeff Moffett, Rev. Jerry Gray, Joe Gonzalez, Brian, Margo, Martha, and Canda.

**Cancer Friends:**

**Other prayer requests:** The world & the church

*Prayer Requests/Names will be removed on the 1st of each month unless otherwise requested. If you would like a name on the prayer list, please use the "Prayer Request" link on our church website, email or phone the church office.*

**NEW MEMBERS WELCOME!** If you would like to join the choir for the remainder of the choir season (April/May), we would love to have you. Chancel Choir rehearses on Sunday mornings at 9:00 AM and Bell Choir rehearses at 11:15 AM on Sunday mornings.